

# Bookcases



Bookcases



*beauty and durability  
that last a lifetime*

Alder/Birch Collection 59



### Classic Collection

These transitional styled units are beautifully crafted from Alder and Red Birch hardwoods. The shelves are 11" deep. The 489W and 491W feature one fixed shelf to ensure stability. All other shelves are adjustable to easily fit favorite books and collectibles. Each unit also comes with adjustable corner glides and wall bracket for added stability. The 701W Alder Lower Door Kit will fit either the 72" or 84" bookcases.

#### 84" x 32" Classic Bookcase • 491W

Unit size: 84" H x 12" D x 32" W  
One fixed and four adjustable shelves: 30 3/4" W x 11" D

#### 72" x 32" Classic Bookcase • 489W

Unit size: 72" H x 12" D x 32" W  
One fixed and three adjustable shelves: 30 3/4" W x 11" D

#### 48" x 32" Classic Bookcase • 748W

Unit size: 48" H x 12" D x 32" W  
Three adjustable shelves: 30 3/4" W x 11" D

491W

489W

748W



### Classic Collection

This is a transitional style that fits well in any décor. Sturdy construction and materials ensure you can store lots of books and collectibles without the shelves sagging. Shelves are 11" deep. The 483W Bookcase features one fixed shelf to ensure stability. All other shelves are adjustable. Each unit comes with adjustable corner glides and a wall brackets. Made of Alder and Red Birch hardwoods.

#### Classic Stepback Bookcase • 483W

Unit size: 72" H x 16 1/4" D x 32" W  
Lower adjustable shelf: 30 3/4" W x 14 3/4" D  
Upper adjustable shelves: 30 3/4" W x 11" D

493W

#### 30 x 32 Classic Console Base • 493W

Unit size: 30" H x 16" D x 32" W  
One adjustable shelf: 30 3/4" W x 14 3/4" D

483W



#### Alder Lower Door Kit • 701W

Fits Classic and Modern units. Door kit includes self-closing, adjustable Euro-style hinges and all hardware. Sold separately.



#### Standard Alder 2-Door Kit • 227W

Fits Classic and Modern units. Door kit includes self-closing, adjustable Euro-style hinges and all hardware. Sold separately.



### Classic Collection

There are lots of options that can be created with these units. The 495W Console is a deeper unit designed with the storage of A/V components in mind. The width allows for placement for a variety of compatible flat screen TVs and monitors. Consider adding the 496W Hutch and get even more storage space for A/V components. The 497W features shelves that are 11" deep, two fixed to ensure stability and eight more that are adjustable. Made of Alder and Red Birch hardwoods.

#### 84" x 48" Wide Classic Bookcase • 497W

Unit size: 84" H x 12" D x 48" W  
Two fixed and eight adjustable shelves: 22 3/4" W x 11" D

#### 30 x 48 Wide Classic Console Base • 495W

Unit size: 30" H x 16" D x 48" W  
Two adjustable shelves: 22 3/4" W x 14 3/4" D

#### 48" x 48" Wide Classic Hutch • 496W

Unit size: 48" H x 16" D x 48" W  
TV opening: 45 15/32" W x 32 15/16" H  
Center compartment: 21 3/16" W x 10 13/16" H  
Outside compartments: 10 7/8" W x 10 13/16" H



#### Classic Alder 4-Door Kit • 775W

Fits Wide Bookcases and Console. Door kit includes self-closing, adjustable Euro-style hinges and all hardware. Sold separately.



#### Flat Panel 4-Door Kit • 776W

Fits Wide Bookcases and Console. Door kit includes self-closing, adjustable Euro-style hinges and all hardware. Sold separately.



489W Classic Bookcases with 701 Door Kits, 495W Console Base with 496W Classic Hutch and 775W Door Kit



## Modern Collection

A sleek design for a more casual or contemporary setting. Sturdy construction and materials ensure you can store books and collectibles without the shelves sagging. The 498W and 499W feature one fixed shelf. The 540W features two fixed shelves. All other shelves are adjustable. Each unit comes with adjustable corner glides and wall brackets. Made of Alder and Red Birch hardwoods.

### 84" x 32" Modern Bookcase • 499W

Unit size: 32" W x 12" D x 84" H  
One fixed & four adjustable shelves: 30 3/4" W x 11" D

### 72" x 32" Modern Bookcase • 498W

Unit size: 32" W x 12" D x 72" H  
One fixed & three adjustable shelves: 30 3/4" W x 11" D

### 84" x 48" Modern Bookcase • 540W

Unit size: 48" W x 12" D x 84" H  
Two fixed & eight adjustable shelves: 22 3/4" W x 11" D

### 48" x 32" Modern Bookcase • 488W

Unit size: 32" W x 12 3/8" D x 48" H  
Three adjustable shelves: 30 3/4" W x 11" D



### Standard Alder 2-Door Kit • 227W

Fits Classic and Modern units. Door kit includes self-closing, adjustable Euro-style hinges and all hardware. Sold separately.



### Flat Panel 4-Door Kit • 776W

Fits Wide Bookcases and Console. Door kit includes self-closing, adjustable Euro-style hinges and all hardware. Sold separately.



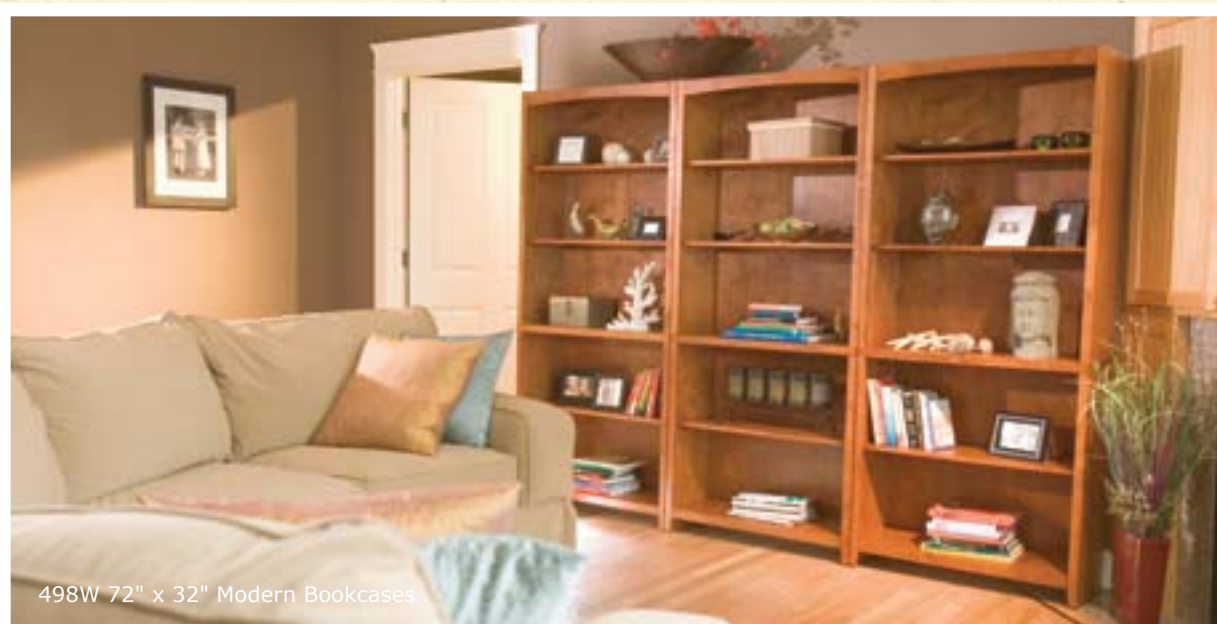
### Alder Lower Door Kit • 701W

Fits Classic and Modern bookcases. Door kit includes self-closing, adjustable Euro-style hinges and all hardware. Sold separately.



### Classic Alder 4-Door Kit • 775W

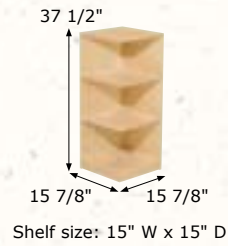
Fits Wide Bookcases and Console. Door kit includes self-closing, adjustable Euro-style hinges and all hardware. Sold separately.



498W 72" x 32" Modern Bookcases

### Short Bookend • 797W

The clean lines of this unit make it exceptionally appealing and versatile. A single unit fits neatly into a corner, while combining units multiply storage and display options for books and collectibles. Made of Alder and Red Birch hardwoods.

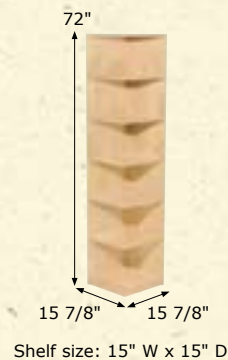


798W Tall Bookends



### Tall Bookend • 798W

The clean lines of this unit make it exceptionally appealing and versatile. A single unit fits neatly into a corner, while combining units multiply storage and display options for books and collectibles. Made of Alder and Red Birch hardwoods.





## Assembled McKenzie Bookcase Collection

This collection of bookcases is classically designed. Solid Alder and Red Birch veneer hardwoods ensure beauty, strength and durability that last a lifetime. The offering is broad with three widths and seven heights. Door kits are also available on designated units or sold separately. Display lots of books, collectibles and more in a beautiful real wood setting.

- Made from American Alder and Red Birch hardwoods.
- Dowel and pocket screwed construction for strength and durability.
- Fitted back for strength.
- All 72", 84", and 96" high units feature fixed center shelves for stability.
- Door kits feature adjustable Euro hinges.
- Flush cut available on left side, right side, or both sides on all units.



1546AUF 36" x 84" McKenzie Bookcases with 2001W 2-Door Kits



Pocket Drilled Top Detail



Euro Hinge Detail



Fitted Back Detail



Flush Cut Detail



Standard Detail



1528AUF  
24" x 96"

1526AUF  
24" x 84"

1524AUF  
24" x 72"

1523AUF  
24" x 60"

1522AUF  
24" x 48"

1521AUF  
24" x 36"

1520AUF  
24" x 29"

## McKenzie 24" Wide Bookcases

We offer seven different heights for our 24" wide McKenzie bookcases. A door kit option is also available for some units. See below for more information.



ASSEMBLED



2-Door Kit • 2000W  
Sold separately or attached to:  
1524AUF, 1526AUF & 1528AUF



### McKenzie 36" Wide Bookcases

We offer seven different heights for our 36" wide McKenzie bookcases. A door kit option is also available for some units. See below for more information.



2-Door Kit • 2001W  
Sold separately or attached to:  
1544AUF, 1546AUF & 1548AUF



1548AUF  
36" x 96"

1546AUF  
36" x 84"

1544AUF  
36" x 72"

1543AUF  
36" x 60"

1542AUF  
36" x 48"

1541AUF  
36" x 36"

1540AUF  
36" x 29"

### McKenzie 48" Wide Bookcases

We offer seven different heights for our 48" wide McKenzie bookcases. A door kit option is also available for some units. See below for more information.



4-Door Kit • 2002W  
Sold separately or attached to:  
1554AUF, 1556AUF, 1558AUF



1558AUF  
48" x 96"

1556AUF  
48" x 84"

1554AUF  
48" x 72"

1553AUF  
48" x 60"

1552AUF  
48" x 48"

1551AUF  
48" x 36"

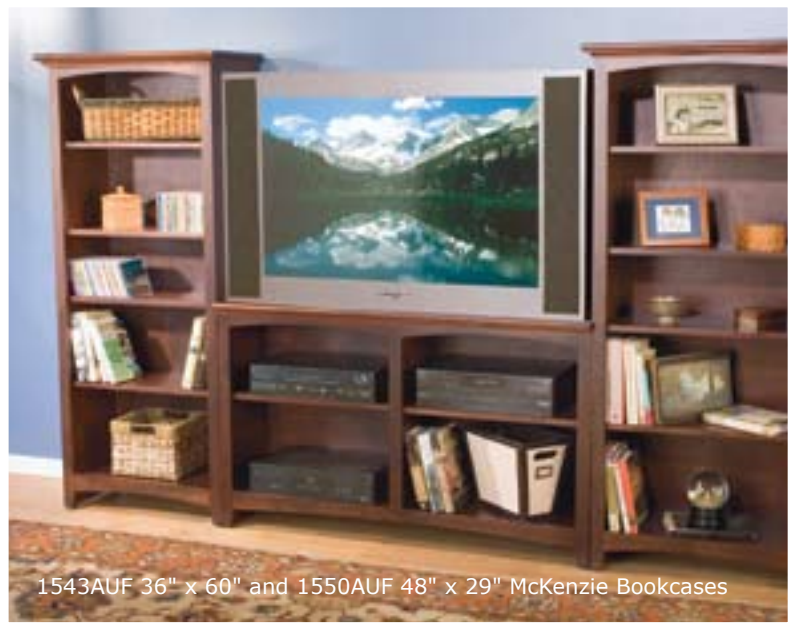
1550AUF  
48" x 29"



## Assembled Shaker Bookcase Collection

This collection of bookcases is classically designed. Solid Alder and Red Birch veneer hardwoods ensure beauty, strength and durability that lasts a lifetime. The offering is broad with three widths and seven heights. Door kits are also available on designated units or sold separately. Display lots of books, collectibles and more in a beautiful real wood setting.

- Made from American Alder and Red Birch hardwoods.
- Dowel and pocket screwed construction for strength and durability.
- Fitted back for strength.
- All 72", 84", and 96" high units feature fixed center shelves for stability.
- Door kits feature adjustable Euro hinges.
- Flush cut available on left side, right side, or both sides on all units.



1543AUF 36" x 60" and 1550AUF 48" x 29" McKenzie Bookcases



Pocket Drilled Top Detail



Euro Hinge Detail



Fitted Back Detail



Flush Cut Detail



Standard Detail



1578AUF  
24" x 96"

1576AUF  
24" x 84"

1574AUF  
24" x 72"

1573AUF  
24" x 60"

1572AUF  
24" x 48"

1571AUF  
24" x 36"

1570AUF  
24" x 29"

## Shaker 24" Wide Bookcases

We offer seven different heights for our 24" wide Shaker bookcases. A door kit option is also available for some units. See below for more information.



ASSEMBLED



2-Door Kit • 2000W  
Sold separately or attached to:  
1574AUF, 1576AUF & 1578AUF



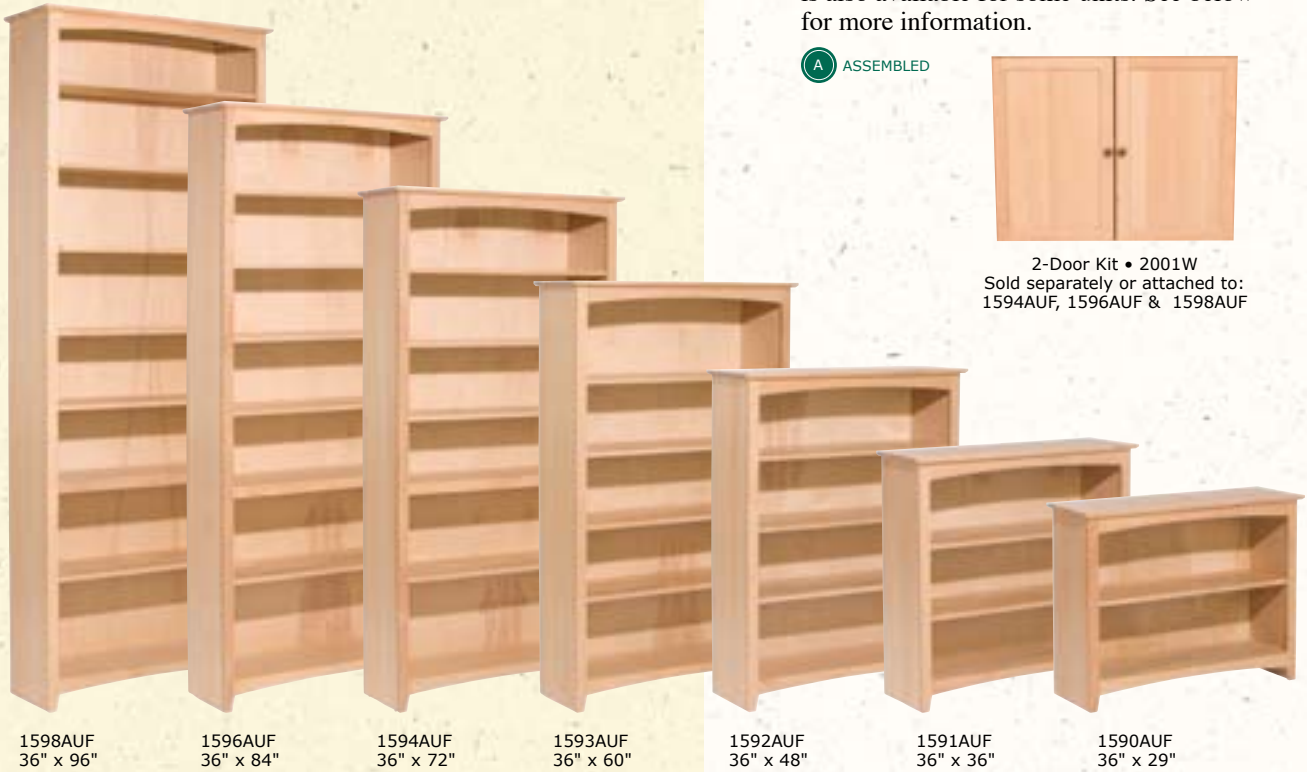
### Shaker 36" Wide Bookcases

We offer seven different heights for our 36" wide Shaker bookcases. A door kit option is also available for some units. See below for more information.

**A** ASSEMBLED



2-Door Kit • 2001W  
Sold separately or attached to:  
1594AUF, 1596AUF & 1598AUF



1598AUF  
36" x 96"

1596AUF  
36" x 84"

1594AUF  
36" x 72"

1593AUF  
36" x 60"

1592AUF  
36" x 48"

1591AUF  
36" x 36"

1590AUF  
36" x 29"

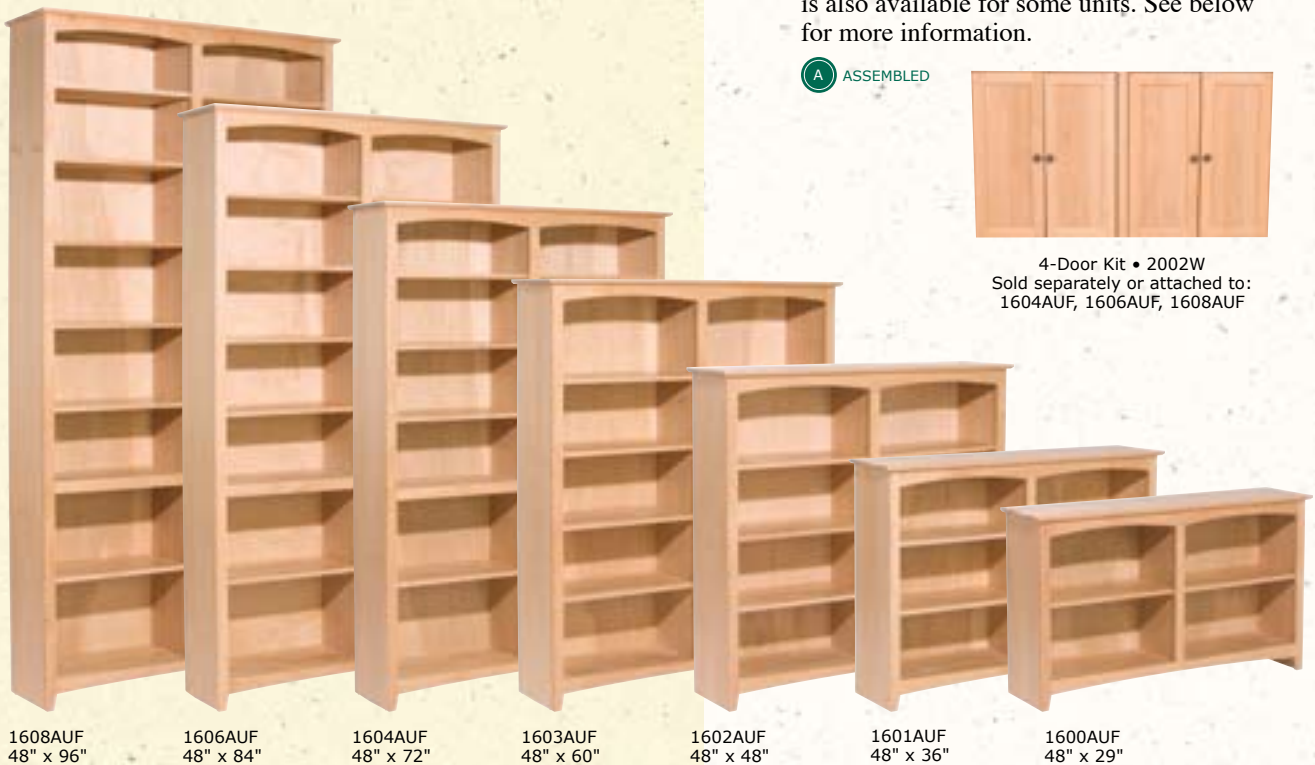
### Shaker 48" Wide Bookcases

We offer seven different heights for our 48" wide Shaker bookcases. A door kit option is also available for some units. See below for more information.

**A** ASSEMBLED



4-Door Kit • 2002W  
Sold separately or attached to:  
1604AUF, 1606AUF, 1608AUF



1608AUF  
48" x 96"

1606AUF  
48" x 84"

1604AUF  
48" x 72"

1603AUF  
48" x 60"

1602AUF  
48" x 48"

1601AUF  
48" x 36"

1600AUF  
48" x 29"