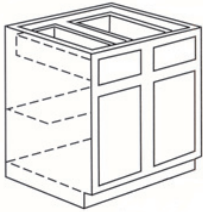


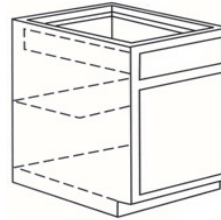
Kitchen Cabinets

Base Cabinets



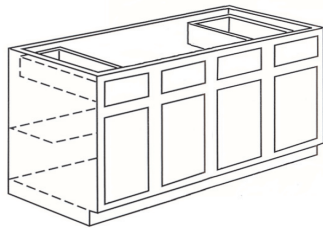
Double Door

B27	27w x 34½h x 24d
B30	30w x 34½h x 24d
B33	33w x 34½h x 24d
B36	36w x 34½h x 24d
B42	42w x 34½h x 24d
B48	48w x 34½h x 24d



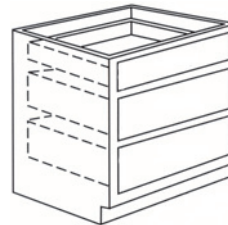
Single Door

B9*	9w x 34½h x 24d
B12	12w x 34½h x 24d
B15	15w x 34½h x 24d
B18	18w x 34½h x 24d
B21	21w x 34½h x 24d
B24	24w x 34½h x 24d



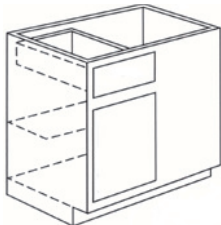
Four Doors

B54	54w x 34½h x 24d
B60	60w x 34½h x 24d



Drawer Base

B15D	15w x 34½h x 24d
B18D	18w x 34½h x 24d
B24D	24w x 34½h x 24d
B30D	30w x 34½h x 24d
B36D	36w x 34½h x 24d

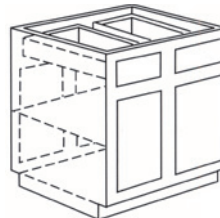


Blind Corner Base

BLB27	27w	9" exposed face / 33" wall space*
BLB30	30w	12" exposed face / 36" wall space
BLB36	36w	18" exposed face / 42" wall space
BLB42	42w	24" exposed face / 48" wall space
BLB48	48w	30" exposed face / 54" wall space

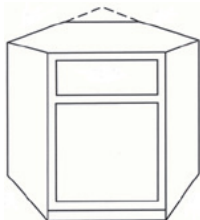
Notes: Blind side is 18" wide. Allow 6" space between cabinet and corner.
Specify left or right

Right hand shown



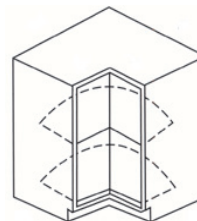
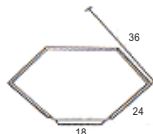
Island Base

BI33	33w x 34½h
BI36	36w x 34½h
BI42	42w x 34½h

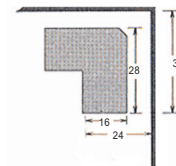


Corner Base

BCR Diagonal Corner
36 x 36w x 34½h x 24d
Wall space required: 36 x 36



B36LS Lazy Susan Corner
28 x 28w x 34½h x 24d
Wall space required: 36 x 36



* "Slab" door only on 9" wide cabinets



LONDON GROVE INDUSTRIES
Pennsylvania Craftsmanship Since 1957